

Appendix C: LVS® 95XX Data Backup

Copyright ©2016
Microscan Systems, Inc.
Tel: +1.425.226.5700 / 800.762.1149
Fax: +1.425.226.8250

All rights reserved. The information contained herein is proprietary and is provided solely for the purpose of allowing customers to operate and/or service Microscan manufactured equipment and is not to be released, reproduced, or used for any other purpose without written permission of Microscan.

Throughout this manual, trademarked names might be used. We state herein that we are using the names to the benefit of the trademark owner, with no intention of infringement.

GS1 Solution Partner



Disclaimer

The information and specifications described in this manual are subject to change without notice.

Latest Manual Version

For the latest version of this manual, see the Download Center on our web site at:
www.microscan.com.

Technical Support

For technical support, e-mail: helpdesk@microscan.com.

Warranty

For current warranty information, see: www.microscan.com/warranty.

Microscan Systems, Inc.

United States Corporate Headquarters
+1.425.226.5700 / 800.762.1149

United States Northeast Technology Center
+1.603.598.8400 / 800.468.9503

European Headquarters
+31.172.423360

Asia Pacific Headquarters
+65.6846.1214

Data Backup

Follow the instructions below to backup data on the LVS-95XX system.

1. Log onto the LVS-95XX system.
2. Click the **Archive** tab, and then click **Create backup database**.

The screenshot shows the 'Archive' tab selected in the top navigation bar. In the left sidebar, the 'Create backup database' option is highlighted with a blue box. The main area displays a table of report data:

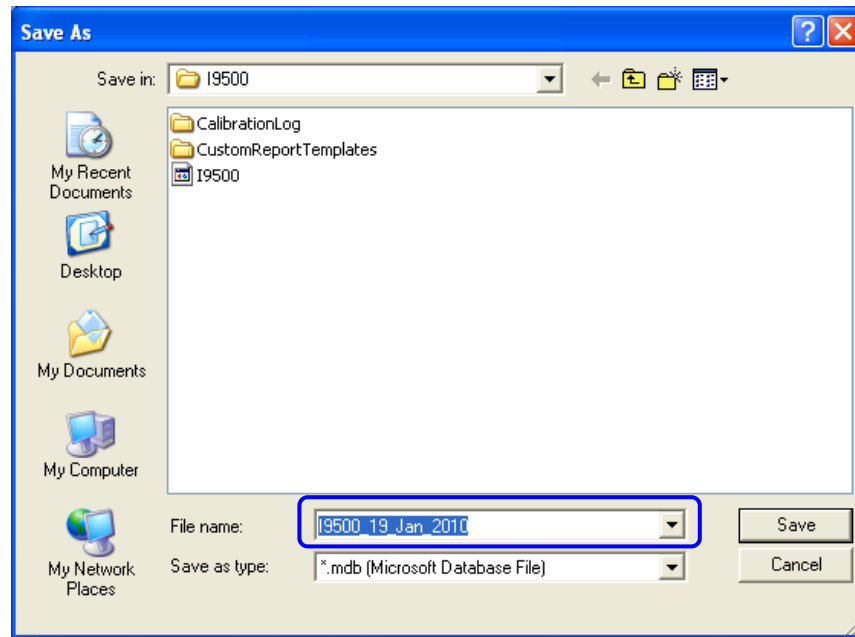
ReportID	SectorID	LclTime	Reference	OverallGrade	De
494	1	22-Dec-2009 10:21		4.0/10.660 (A)	000
495	1	22-Dec-2009 10:21		4.0/10.660 (A)	000
496	1	22-Dec-2009 10:21		4.0/10.660 (A)	000
497	1	22-Dec-2009 10:25		4.0/10.660 (A)	000
498	1	22-Dec-2009 10:36		4.0/10.660 (A)	000
499	1	22-Dec-2009 10:47		2.7/06.660 (B)	012
500	1	22-Dec-2009 10:47		2.7/06.660 (B)	012
501	1	22-Dec-2009 10:47		2.7/06.660 (B)	012
502	1	22-Dec-2009 10:47		2.8/06.660 (B)	012
503	1	22-Dec-2009 10:48		2.8/06.660 (B)	012
504	1	22-Dec-2009 10:48		1.0/06.660 (D)	012
505	1	22-Dec-2009 10:48		2.7/06.660 (B)	012
506	1	22-Dec-2009 10:48		3.7/06.660 (A)	012
507	1	22-Dec-2009 10:48		3.7/06.660 (A)	012
508	1	22-Dec-2009 10:48		3.7/06.660 (A)	012
509	1	22-Dec-2009 10:48		3.7/06.660 (A)	012
510	1	29-Dec-2009 11:08		4.0/06.660 (A)	012
511	1	29-Dec-2009 11:08		4.0/06.660 (A)	012

Below the table, there are radio buttons for 'Preview results in above table' (selected) and 'Generate HTML file (for printing)'. At the bottom, there is a query input field with the text 'Select ReportID, SectorID, LclTime, Reference, OverallGrade, DecodedText Fr...' and an 'Execute query' button.

3. Click the **Save in** drop-down list and select the folder or drive to which you want to save.

The 'Save As' dialog box is shown. The 'Save in' dropdown is set to 'I9500'. The file name is 'I9500 19 Jan 2010' and the save as type is '*.mdb (Microsoft Database File)'. The 'Save' button is highlighted.

4. In the **File name** box, enter a new name for the file, or keep the default file name which is entered as I9500_[current date].



5. Click **Save**.